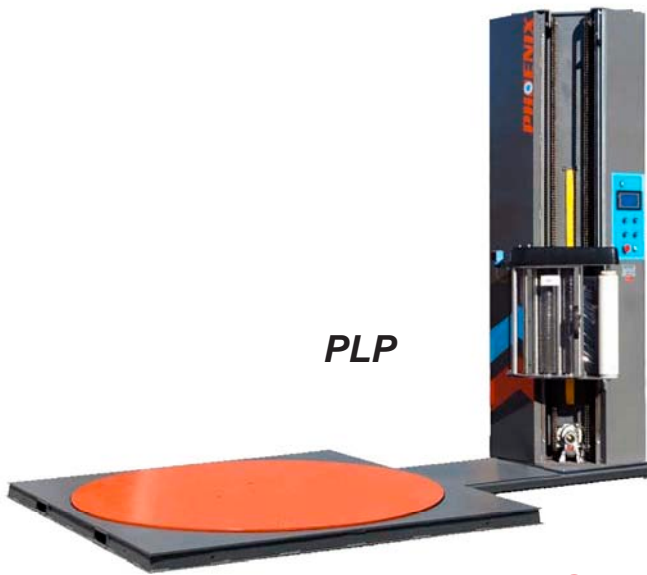


# PLP & PHP-2200 LOW & HIGH PROFILE PALLET STRETCH WRAP MACHINE

**PHOENIX**



**PLP**



**Touch Screen Control**



**PHP**

## Machine Specifications & Features

### Control Features

- 24 V Control System
- Omron PLC & Touch Screen Control Panel
- Control Cabinet Incorporated in Tower
- Current Overload Protection
- Photo-eye "Auto-Height" Sensing with On/Off Switch
- DC/SCR Variable Speed Drives
- Power On / Off Switch (Illuminated)
- "Start" with "Cycle Pause" Feature
- Large Emergency Stop
- Spiral Up or Spiral Up/Down Programs
- Manual Carriage Jog (Up & Down)
- Variable Turntable Speed
- Variable Carriage Travel Speed (Up & Down Separately)
- Separate Top & Bottom Wrap Counters (1-9)
- Film Force to Load (Film Tension) Control
- Reinforce Wrap (with Selectable Counter)
- Selectable Overwrap Height
- Table Jog Control
- Password Protected Wrap Settings (User Password can be changed if needed)
- Date & Time Feature
- Total Pallets Wrapped Counter
- Alarm Screen & Alarm History

### Film Delivery System

- 20" "GENESIS 2000" Powered Pre-Stretch
- Up to 300% Pre-Stretch Capability
- Adjustable Electronic Film Force Control
- Mechanical Film Force Adjustment (To Increase or Decrease Minimum Force Setting)
- True Linear Solid State Film Feed Sensor
- 1/2 HP DC Pre-Stretch Motor for Superior Torque and Speed Control
- Auto-Shutoff of the Pre-Stretch for greater Safety
- Extremely Easy to Load
- Pre-Stretch Rollers Guaranteed For Life\*

### Carriage Lift

- UHMW-PE Carriage Glides for Smooth **Maintenance free Operation**
- Dual ANSI # 50 Chain Lift
- Removable Panel for easy Access to Chain Tensioner
- 1/2 HP DC/SCR Controlled Motor With 60:1 Reducer for Self Locking Feature (Synthetic Oil Filled)

### Turntable Drive

- 3/4 HP DC/SCR Controlled Turntable Drive Motor
- Positive Turntable Alignment
- Electronic Soft Start & Adaptive Deceleration
- #50 ANSI Chain Drive for Low Maintenance & Reliable Operation
- **5500 lb.** Turntable Capacity

### Low Profile (PLP) Features

- **# 28x H.D.** Table Support Wheels. **No Lubrication Required**
- 67" Diameter Turntable
- 2 7/8" Table Height (Raised 1/4" Above Surround)
- 3/8" Thick Turntable
- Full Surround for Greater Safety and Allows for Easy "In-Floor" Installation
- Forklift Portable from the Front & Back of Machine
- Optional Ramps for Regular & HD Applications

### High Profile (PHP) Features

- **9 H.D.** Support Casters c/w grease nipples & roller bearings
- Formed Octagonal Table for Maximum Strength
- 8-3/4" Table Height
- Forklift Portable from The Front & Back of Machine

### Technical Information

- Power: 120VAC, 1 phase, 60 hz  
15 amps dedicated line
- Turntable Speed: **15 RPM** Variable Speed
- Max. Load Weight: **5,500 lbs.** 48" Octagonal Table
- Max Load Size: **56"W x 56"L** (80" load diagonal) **(PHP)**  
**65"W x 65"L** (92" load diagonal) **(PLP)**
- Shipping Weight: 1190 lbs.(PHP) 1485 lbs (PLP)
- CSA / UL & CE Electrical Components  
Operator's Manual

For more information call (514) 956-1525 or visit us at: [www.phoenixwrappers.com](http://www.phoenixwrappers.com)

# PLP & PHP-2200 LOW & HIGH PROFILE PALLET STRETCH WRAP MACHINE

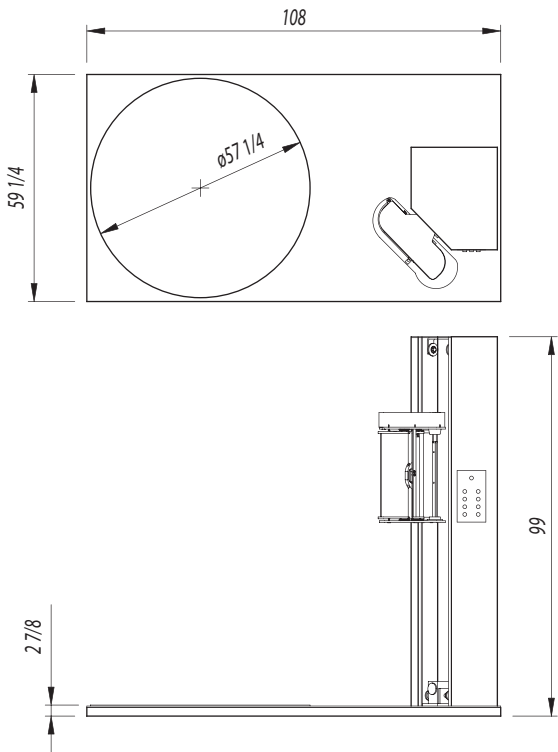


## The PHOENIX "CLASSIC 2200" Series Advantage

The High and Low Profile "2200" Series machines were conceived to be a long term workhorse for high volume or "tough" environments. The Tower for this series provides quick easy access to the electrical panel as well as other components for quick adjustment or trouble shooting. The Dual chains of the carriage lift provide greater safety and security. The film carriage is mounted at an angle for excellent ergonomics allowing the operator to manipulate the film and yet still have the control panel within easy reach. The carriage is capable of wrapping the lightest and most unstable loads due to its superior sensitivity and film feed capability, which is fully adjustable to meet your specific wrap requirements. The Low Profile has the motor and an "In line Reducer" for the turntable enclosed in the tower for total protection as well as easier maintenance. The turntable supports on both machines are designed for higher load capacities and greater volume. They are also capable of higher turntable speeds for shorter cycle times (more pallets wrapped per hour). The "Touch Screen" control provides capabilities not found on any other machines of this price. Wrap parameters can be "Password Protected" for critical wrap requirements. The machine logs total pallets wrapped. There is an "Alarm Screen" that will automatically appear telling the operator what needs to be corrected if something is wrong. These machines are truly "State of the Art" and are extremely reliable in "Real World" applications. Although a bit more expensive initially, these machines are loaded with features and benefits. Their longevity, reliability and ease of maintenance, while using many locally available components, truly makes these machines one of the least expensive to own and operate over the years.

When other "Cheaper" machines need to be replaced, the "2200" series will still be going strong!

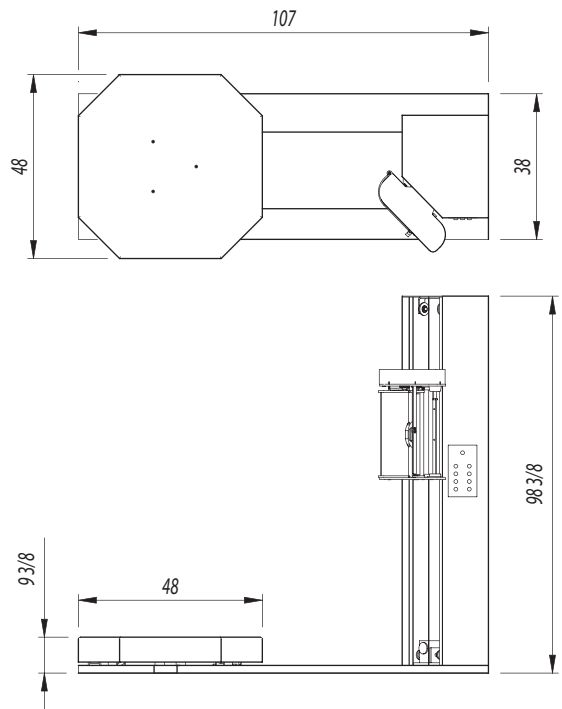
### Low Profile PLP-2200 Dimensions



**PLP-2200 Wrap Height (with 8 ft. Tower) : 80"**

**Maximum Load Size: 65" x 65" x 80" H. (92" Diag.)**

### High Profile PHP-2200 Dimensions



**PHP-2200 Wrap Height (with 8 ft. Tower) : 80"**

**Maximum Load Size : 56" x 56" x 80" H. (80" Diag.)**

Distributed By: